

OutReach Magazine

Advertising Rates and Specifications

Advertising Rates and Specifications

Material Requirements

Acceptable Formats: High resolution PDF with all fonts and images embedded. CMYK process color only, 300 dpi grayscale/color. **Note:** *Faxes, photocopies and other low-quality originals will not be accepted as camera-ready artwork.*

Delivery: Submit files on CD, or via email (only if less than 3mb). Contact us for FTP uploading instructions for files larger than 3mb.

Circulation - 4,400

Target: *OutReach's* audience is made up of the management and leadership of Catholic organizations that belong to one or more CBS programs. The magazine delivers useful and interesting information on topics that are relevant and important to our members as leaders in today's Catholic organizations.

Cancellation Policy

Any cancellations of single insertions must be received no later than 30 days prior to the space deadline for that issue. All cancellations must be received in writing via email to brian.page@cbservices.org.

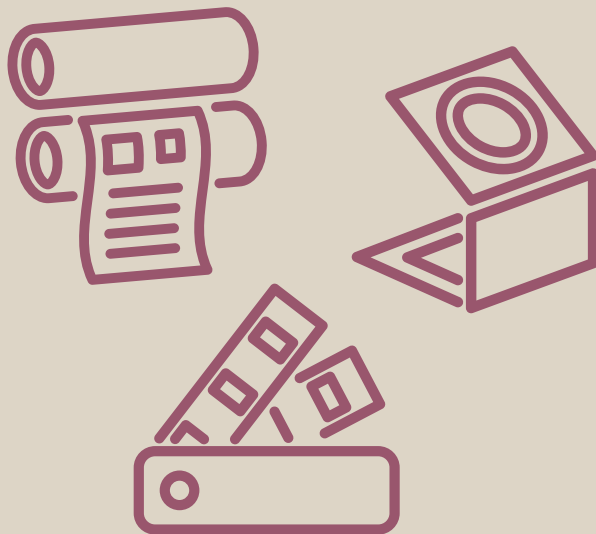
Specifications

Trim size:	8.5" x 11"
Printing method:	Sheet fed, full-run
Binding method:	Saddle stitched
Color:	CMYK

Payment Terms: Terms are net 30 days. Delinquent balances are subject to 18 percent annual finance charges (1.5 percent per month). Advertising agency commissions will be void if payment is not received in accordance with payment terms.

Call or Click Today!

800.807.0200 (x3092)
matt.robby@cbservices.org
cbservices.org/outreach



OutReach

A Christian Brothers Services Publication

Rates

Circulation

Ad Dimensions

Material Requirements

Printing Specifications

OutReach Magazine

Advertising Rates and Specifications

Rates - All ads are printed four-color process

Size	1x	2x
A - Full page	\$2,000	\$1,800
B - 1/2 page	1,100	1,000
C - 1/3 page	900	850
D - 1/4 page	600	550
E - 1/6 page	400	350
F - 1/2 spread	2,000	1,800
G - Full spread	4,000	3,800

Ad Dimensions

Size - Inches

Full page - bleed	8.75 x 11.25
Full page - final trim	8.5 x 11.0
Full page - no bleed	7.5 x 10.0
1/2 page horizontal	7.5 x 5.0
1/2 page vertical	3.625 x 10.0
1/3 page	2.375 x 10.0
1/4 page	3.625 x 5.0
1/6 page	2.375 x 5.0
1/2 spread - bleed	17.25 x 5.125
1/2 spread - final trim	17.00 x 5.0
Full spread - bleed	17.25 x 11.25
Full spread - final trim	17.0 x 11.0

Note: All type must be kept at least 3/8" inside trim lines.

